

GREEN CRUISE PORT (GCP)

Sustainable Development of Cruise Port Locations

Hans-Ulrich Wolff, GCP Communication Manager

April 19th, 2018
Piraeus / Greece



GCP Overview (1/3)

Basic Information

EU Interreg Programme, Project Aim, -Duration, -Partner and -Budget

- GCP is a project in the EU [Interreg Baltic Sea Region Programme](http://www.interreg-baltic.eu) 2014-2020 (www.interreg-baltic.eu).
- GCP elaborates a multidimensional strategic approach for a sustainable and qualitative future development for cruise shipping in port areas.
- GCP encourages investments and procedures in environmentally friendly cruise port infra- and superstructure in the Baltic Sea Region (BSR).
- GCP will be implemented from March 2016 to February 2019.
- GREEN CRUISE PORT embraces 20 partners, covering geographically all BSR countries and The Netherlands.
- Budget: 2.8 Mio € (ERDF/NO budget 2.1 Mio € plus 0.7 Mio € own contribution).

GCP Overview (2/3)

Project Map

Baltic Sea Region (BSR)



Partner Structure

Port Authorities (plus two Cruise Lines, a Research Institute and a Governmental Body)

PROJECT PARTNERS:

- 1. Hamburg Port Authority (“Lead Partner”)
- 2. Hamburg Cruise Net e. V.
- 3. Rostock Port
- 4. Freeport of Riga Authority
- 5. Port of Tallinn
- 6. Klaipeda State Seaport Authority
- 7. Maritime Institute Gdansk
- 8. Port of Helsinki
- 9. Port of Bergen
- 10. Port of Esbjerg

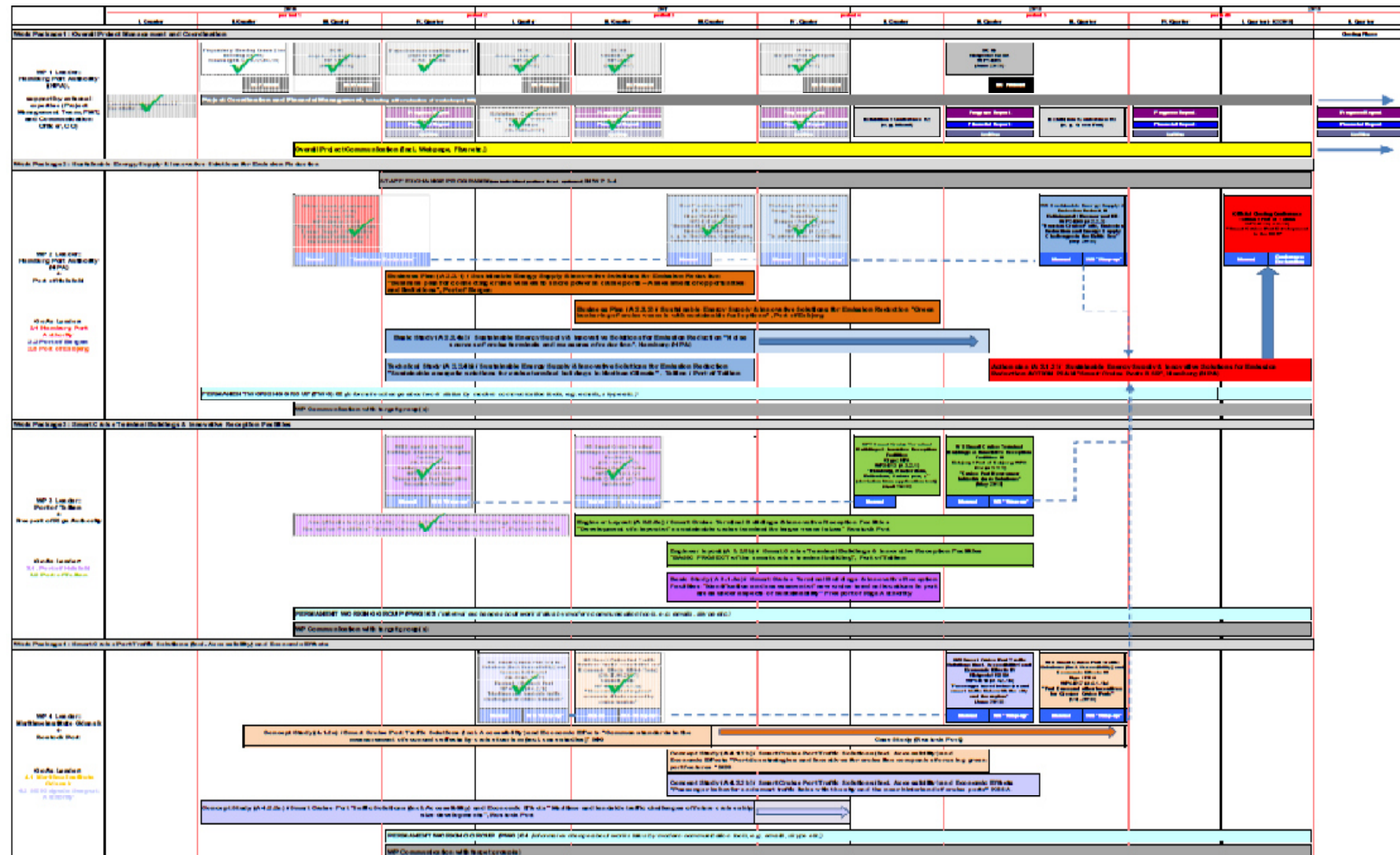
ASSOCIATED ORGANISATIONS:

- Port of Oslo,
- 12. Port of Stockholm,
- 13. Port of Copenhagen
- 14. ROSMORPORT Kaliningrad Branch
- 15. Port of Amsterdam
- 16. Port of Gothenburg
- 17. ROSMORPORT NW BASIN St. Petersburg
- 18. AIDA Cruises
- 19. TUI Cruises
- 20. Senate Chancellery of the Free and Hanseatic City of Hamburg

GCP Outline (1/3)

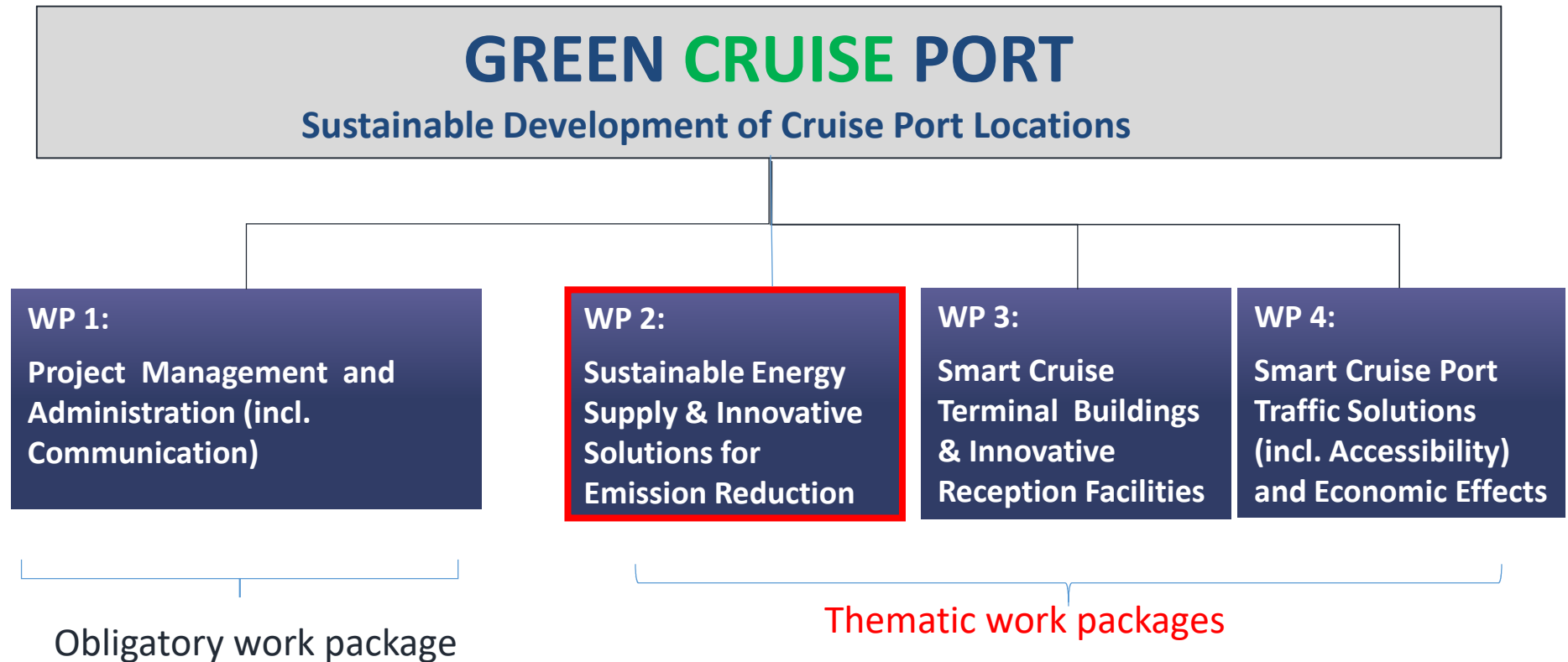
Project Structure

Complex Workplan



Project Structure

Four Work Packages (WP)



Project Structure

Main Tools for a Sustainable Project Implementation:

- 10 Thematic Workshops (WS) and 2 (Policy) Conferences for Partner Staff and Cruise Industry Stakeholder
- 2 Best Practice Tours (BPT) for Partner Staff
- 7 Steering Committee Meetings (internal)
- 12 Conceptual-, Analytical-, Technical-Studies and Business Plans (ST), to be published on project website (www.greencruiseport.eu)
- Action Plan „Smart BSR Cruise Ports“
- Staff Exchange Programme (bi-lateral expert meetings)

GCP „en detail“ (1/3)

Thematic Work Packages (WP) Activities / Outputs

WP 2: Sustainable Energy Supply & Innovative Solutions for Emission Reduction

Sub Aim:

Reduction of cruise vessel emissions in harbours and sustainable adaptation of cruise port infrastructure to the requirements of the latest technical developments in the cruise shipping sector.



Activities / Outputs :

- Opening and Closing Conferences at Port of Hamburg (06/2016) and Port of Tallinn (02/2018), incl. presentation of the “Smart Cruise Ports BSR Action Plan”
- WS “Improved Ports – Cruise Line Collaboration” at Port of Bergen (11/2017)
- BPT “BSR Cruise Ports Copenhagen/Oslo”(09/2017)
- WS “Russian Cruise Ports: Emission Reduction and Energy Supply Challenges” (Kaliningrad, 08/2018)
- ST “Opportunities and Limitations for Connecting Cruise Vessels to Shore Power” (on-line)
- ST “ Green Bunkering with sustainable fuel options”
- ST “Emission sources and possible mitigation measures of cruise terminals” (on-line soon)
- ST “Sustainable Energetic Solutions for Cruise Terminal Buildings (in Northern Climate)” (on-line)

Thematic Work Packages (WP) Activities / Outputs

WP 3: Smart Cruise Port Buildings & Innovative Reception Facilities

Sub Aim:

Establishment of a sustainable cruise port superstructure, like modern terminal buildings, barrier-free access for passenger and suitable reception facilities, especially in the light of growing cruise ship sizes.



Activities / Outputs :

- WS “Innovative Waste Management and Reception Facilities” at Port of Helsinki (11/2016)
- WS “Modern Cruise Port Architecture” at Port of Tallinn (05/2017)
- BPT “NSR Cruise Ports Amsterdam /Ijmuiden / Rotterdam/Antwerp” (05/2018)
- WS “Cruise Port Newcomer Infrastructure Solutions” (Esbjerg, 06/2018)
- ST “Green Cruise Port Waste Management” (on-line)
- ST “Identification and assessment of new cruise terminal locations in port areas under aspects of sustainability ”
- ST “Basic Project of Smart Cruise Terminal Building”

GCP „en detail“ (3/3)

Thematic Work Packages (WP) Activities / Outputs

WP 4: Smart Cruise Port Traffic Solutions (incl. Accessibility) and Economic Effects

Sub Aim:

Environmentally friendly traffic integration of cruise ports into the transport system of the port locations (incl. near hinterland) and economic impacts on the cruise port cities and the regional hinterland.



Activities / Outputs :

- WS “Maritime and Landside Traffic Challenges” at Rostock Port (03/2017)
- WS “Measurement of Regional Economic Effects Caused by Cruise Tourism” at Maritime Institute Gdansk (06/2017)
- WS “Port Dues and other Incentives for Greener Cruise Ports” at Freeport of Riga Authority (04/2018)
- WS (and ST) “Passenger Travel Behavior and Smart Traffic Links with the City and the Region” at Klaipeda State Seaport Authority (09/2018)
- ST “Common Standards in the measurement of economic effects by cruise tourism” (on-line)
- ST “Maritime and Landside Traffic Challenges (in the light of growing ship sizes)”
- ST “Port Due Strategies and Incentives for Cruise Lines using Green Port Features”

GCP Communication (1/3)

Flyer

Available at Conference Table



INTERREG BSR Programme and the GREEN CRUISE PORT project

Green Cruise Port (GCP) is a project in the EU Interreg Baltic Sea Region (BSR) Programme 2014-2020 (www.interreg-baltic.eu).

GCP embraces 20 partners, incl. associated organisations, which represent port authorities, cruise lines, a maritime research institute and a governmental body. Geographically it covers all BSR countries and the neighbouring North Sea.

■ EU Member States ● Project Partners
■ non-EU States □ Associated Organisations



BSR Programme Area

Map: Interreg Baltic Sea Region

Partners:



Associated Organisations:





Sustainable Development of Cruise Port Locations
2016 – 2019

www.greencruiseport.eu

Lead Partner:
Hamburg Port Authority
Ingo Fehrs
+49 40 42847 3019
ingo.fehrs@hpa.hamburg.de

Project Management:
Hamburg Port Consulting GmbH
Dr. Madlen Kroh
+49 40 740 08 118
m.kroh@hpc-hamburg.de

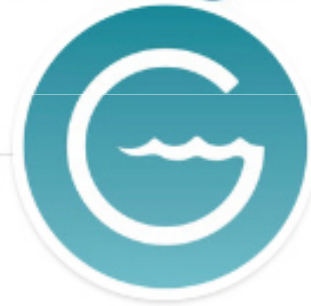
Communication Manager:
Hans-Ulrich Wolff
wpmarine@t-online.de

Cover photo: © Port of Tallinn
Photos inside: © Dummy Name-Longname

GCP Communication (2/3)

Social Media

LinkedIn



GREEN CRUISE PORT (GCP)

Sustainable Development of Cruise Port Locations

Hamburg Port Authority (Lead Partner)



GCP Communication (3/3)

Website

www.greencruiseport.eu

The image shows a screenshot of the Green Cruise Port website. At the top, there is a navigation bar with the following links: Home, Project, Events, **Studies & Publications**, Partners, and Partner Area. The 'Studies & Publications' menu is highlighted with a blue circle, and a list of items is shown: 'Cruise market in Baltic Sea and neighboring North Sea', 'Green Cruise Port Waste Management', and 'Press Releases'. Below the navigation bar, the main content area features the title 'Green Cruise Port' and the subtitle 'Sustainable Development of Cruise Port 2016 - 2019'. A large blue circle is drawn over the 'Studies & Publications' section, containing the text 'GREEN CRUISE PORT publications to be downloaded here!'. To the right of the main content, there is a map of the Baltic Sea region showing various countries and cities. A QR code is located in the bottom right corner of the website. The website's logo, 'GREEN CRUISE PORT', is in the top left, and the 'Interreg Baltic Sea Region' logo is in the top right.

GREEN CRUISE PORT

Studies & Publications

GREEN CRUISE PORT
publications to be
downloaded here!

greencruiseport.eu

GCP – Sustainable Development of Cruise Port Locations

First „Medal“

Baltic Sea Clean Maritime Award (2017)



GCP – Sustainable Development of Cruise Port Locations

Invitation for next Event

Welcome to Riga:

GREEN CRUISE PORT Sustainable Development of Cruise Port Locations

Workshop – Port Dues and other incentives for Greener Cruise Ports

Riga /Latvia, April 25th-26st 2018

Venue: Astor Riga hotel

Z.A.Meierovica blvd. 10, Riga, LV-1050, Latvia



GCP – Sustainable Development of Cruise Port Locations

„Glamour to the Port“,.....and „Green(er)“!

„Blue Port“ and Onshore Power Station at Cruise Terminal Hamburg-Altona





EUROPEAN UNION

EUROPEAN
REGIONAL
DEVELOPMENT
FUND

Thank you for your attention!

Contact:

Hans-Ulrich Wolff

Communication Manager

GREEN CRUISE PORT (GCP)

c/o Wissenschaft und Praxis marine

Mobile: +49-1703819069

E-mail: wpmarine@t-online.de