

THE PORT AND THE CITY

Dr. Torsten Sevecke

www.mediaserver.hamburg.de / Maxim Schulz

April | Milos - Greece

AGENDA

- 01 Characteristics of the Port of Hamburg
- 02 Economical Performance
- 03 A Seaport far away from the Sea
- 04 Hamburg: an emerging Cruise Port
- 05 Located in the Heart of a livable City
- 06 Smart Port



CHARACTERISTICS OF THE PORT OF HAMBURG



Hamburg

A satellite map of Northern Europe and the Baltic Sea region. The map shows the North Sea to the west, the Baltic Sea to the east, and the surrounding landmasses including parts of the British Isles, Scandinavia, and Central/Eastern Europe. Hamburg is circled in red. Various cities are labeled, including London, Berlin, Warsaw, and Stockholm. The text overlays provide context about the location and importance of the Hamburg region.

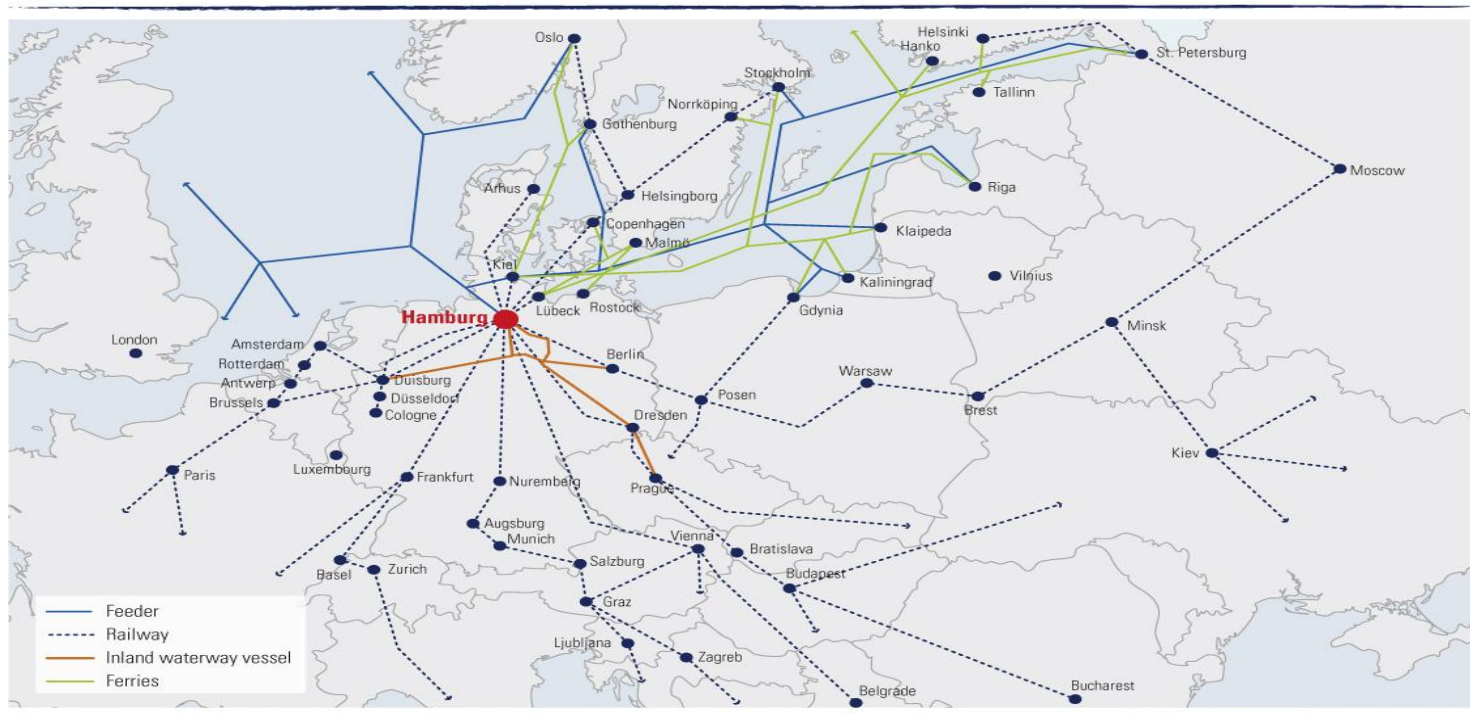
located in between North and Baltic Sea

**most important
trading partners
in seaborne
container traffic:
Asia and
Baltic Region**

**general cargo
volume 2016:
No. 1 in Germany
No. 3 in Europe**

**main hinterland:
Northern and Eastern
Germany, Central and
Eastern Europe**

THE PORT OF HAMBURG AND ITS HINTERLAND CONNECTIONS



Source: Hafen Hamburg Marketing



largest railway port in Europe

about 10.000 vessel calls per year

**wide range of activities:
from handling
all sorts of goods and
logistics services
to industrial production**

**one of the largest
logistics and industrial
zones in Germany**

HAMBURG METROPOLITAN REGION

28,500
square kilometers

175.8 billion
GDB (Euro)

5.2 million
inhabitants

2.5 million
working population

As of 1.3.2017 MRH



4
federal
states

19
districts/
cited



www.mediaserver.hamburg.de / Andreas Vallbracht

ECONOMICAL PERFORMANCE



Hamburg

Seaborne Cargo Handling

January to December 2016



138,2
M. TONS

+0,3 % 

+2,5 %

IMPORT

-2,6 %

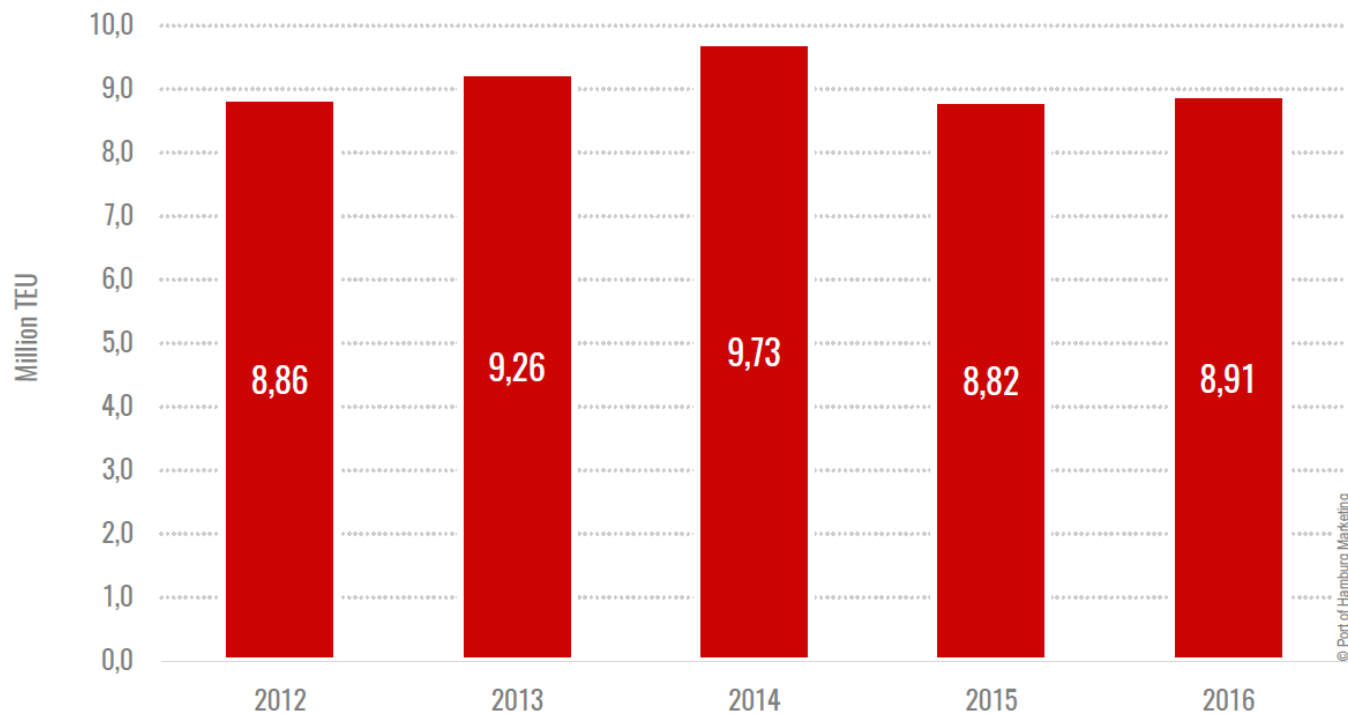
EXPORT

TOTAL



Container Handling

January to December 2016

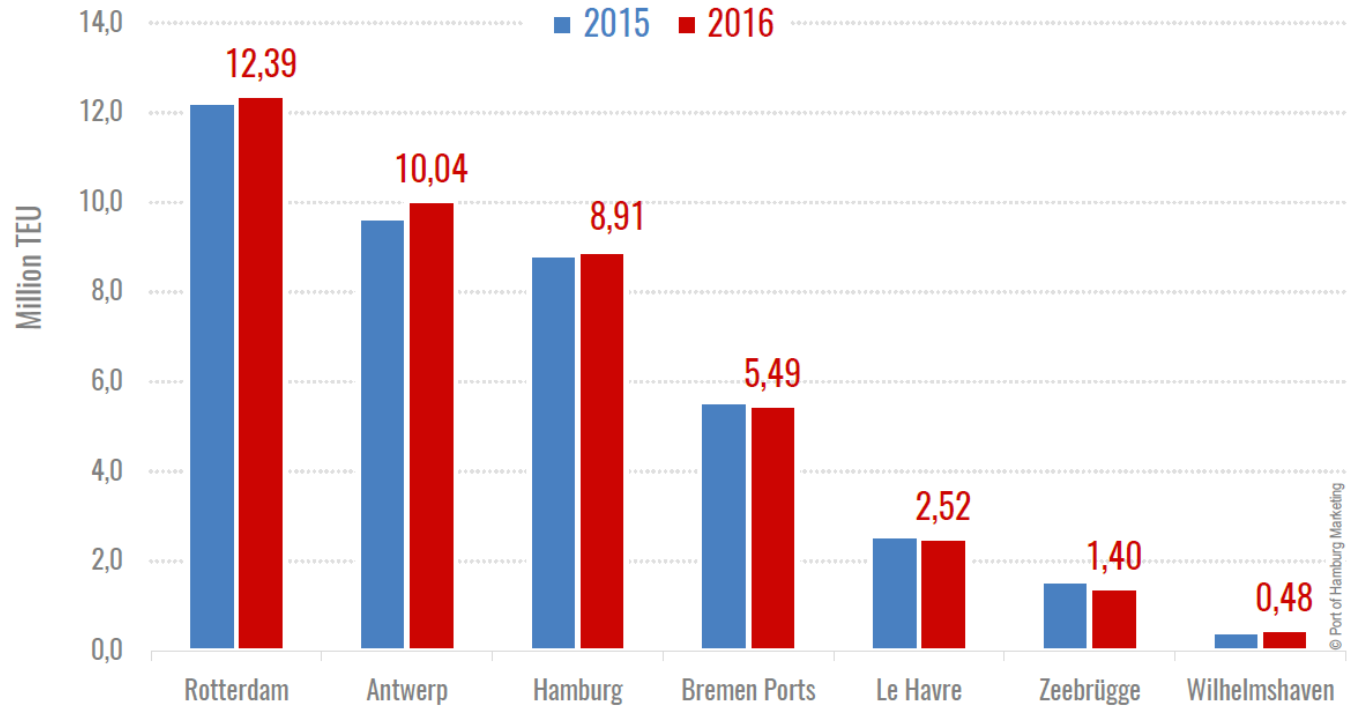


© Port of Hamburg Marketing



Container Handling at Ports in Northern Europe

January to December



BENEFITS TO THE LOCAL ECONOMY

Direct port and port-related employment	130,000 (Hamburg)* 155,000 (metropolitan region) 270,000 (Germany)
Direct port and port-related added-value	€ 12.5 billion (Hamburg) € 22.0 billion (Germany)
Direct port and port-related tax revenue	€ 900 million (Hamburg)

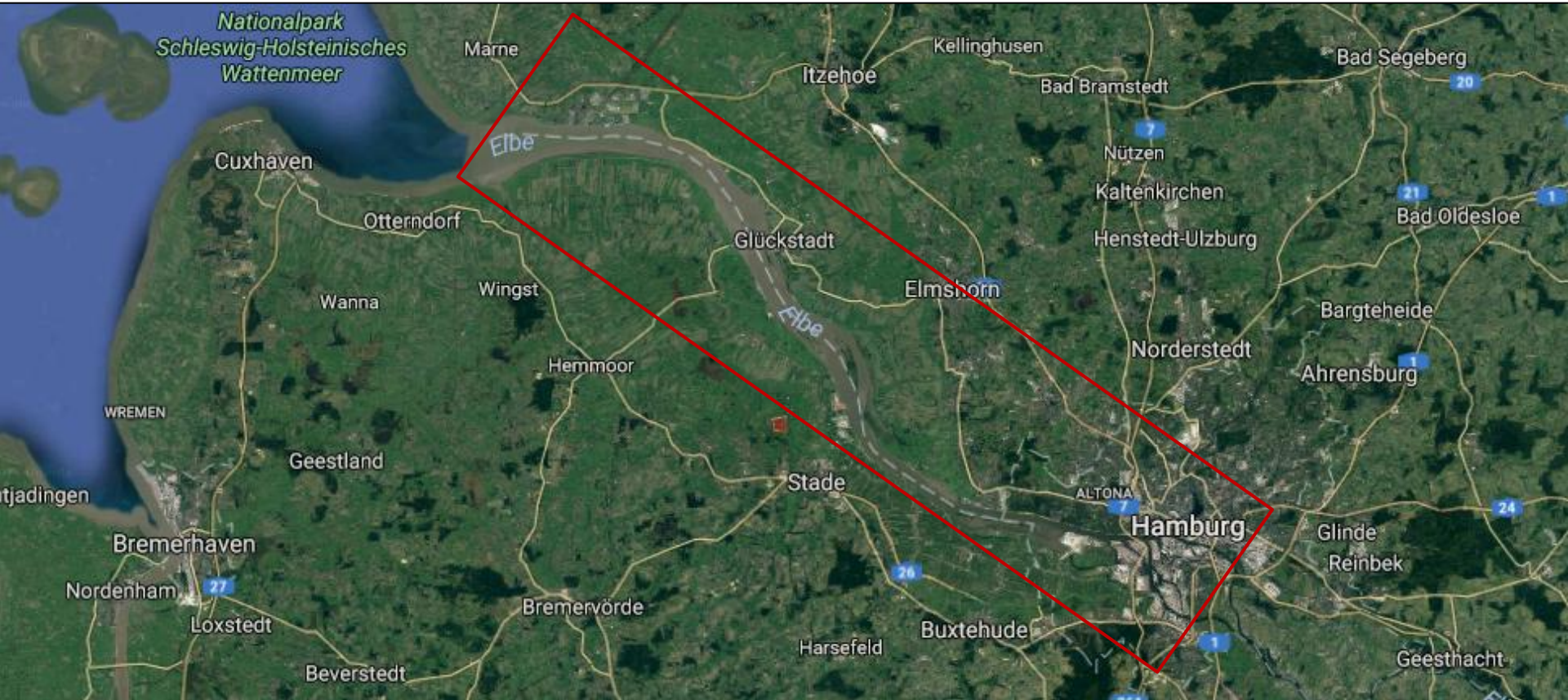
* All figures are approximate and based on Data of 2014.

A SEAPORT FAR AWAY FROM THE SEA



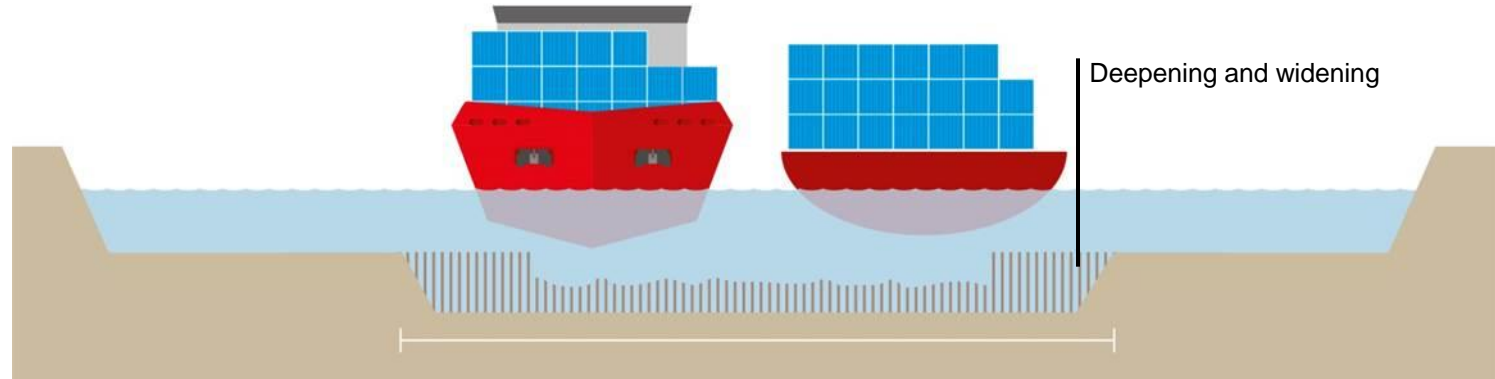
Hamburg

LIFELINE OF OUR PORT: THE ELBE RIVER



FAIRWAY ADJUSTMENT FOR MORE DEPTH AND WIDTH

- Construction of outer dams at shipment point (UDA)
- Removal of fresh sediments through maintenance
- Subsequent start of expansion work in Hamburg and assembly of dredging material into UDA
- Improvement of navigability within first year of implementation (width)
- Release of new target depth and meeting box until end of second year of implementation



HAMBURG AND FEDERAL GOVERNMENT CARRY OUT FAIRWAY ADJUSTMENT TOGETHER



Dredging activities include:

- 20m widening between Glückstadt and Hamburg
- Deepening for draught independent of tides (13.50m) and dependent of tides (14,50m)
- Meeting box with a width of 385m just outside the Port

HAMBURG: AN EMERGING CRUISE PORT



Hamburg

3 cruise terminals:

- Cruise Center Altona
- Cruise Center HafenCity
- Cruise Center Steinwerder



Passengers

1200000

1000000

800000

600000

400000

200000

0



104

118

160

177

187

150

171

197

241

245,800

314,000

430,300

553,000

590,000

525,000

722,000

800,000

1,000,000

+ 203,000
guests

Calls

300

250

200

150

100

50

0

Jahr	2010	2011	2012	2013	2014	2015	2016	2017	2020
Passagiere	245.800	314.000	430.300	553.000	590.000	525.000	722.000	800.000	1.000.000
Calls	104	118	160	177	187	150	171	197	241

Jahr Passagiere Calls

GREEN CRUISING

✓ 3 CRUISE CENTERS WITH 3 ALTERNATIVE ENERGY SOLUTIONS



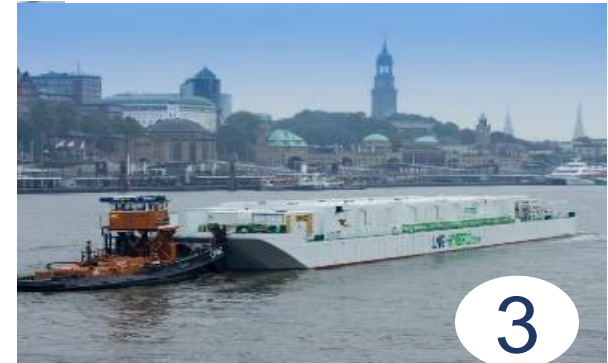
1

Onshore Power
Supply



2

Liquefied natural gas
(LNG) from LNG truck



3

Low emission LNG
via Power Barge

LOCATED IN THE HEART
OF A LIVABLE CITY



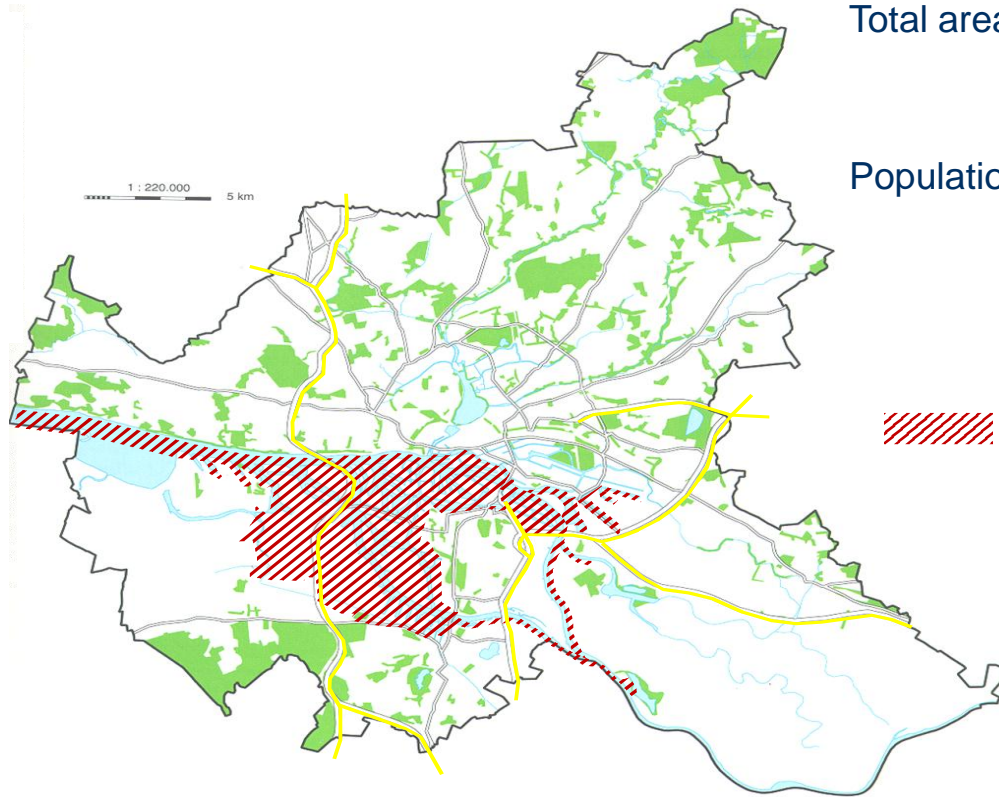
Hamburg



the port is
always
present and a
part of
everyday life



HAMBURG: A CITY AND A PORT



Total area: 755.26
square kilometers

Population: 1.8 million

 Port area: 72 square
kilometers

= approx. 10% of the total
area of Hamburg

THE PORT AND THE CITY: A CHALLENGING SYMBIOSIS

Typical areas of friction:

emissions

traffic and congestion

ecological implications

infrastructure extensions

competition for scarce land

urban development at the ports periphery

increasing use of the port as event location

HOW TO BALANCE CONFLICTING INTERESTS?

reduction of emissions

application of high environmental standards

promotion of alternative energy solutions (onshore power, LNG)

emission tolerant urban development at the ports periphery

buffer zones between residential areas and port activities

enhancement of efficient land usage

citizen participation in planning processes

promotion of rail and inland waterways

SMART PORT

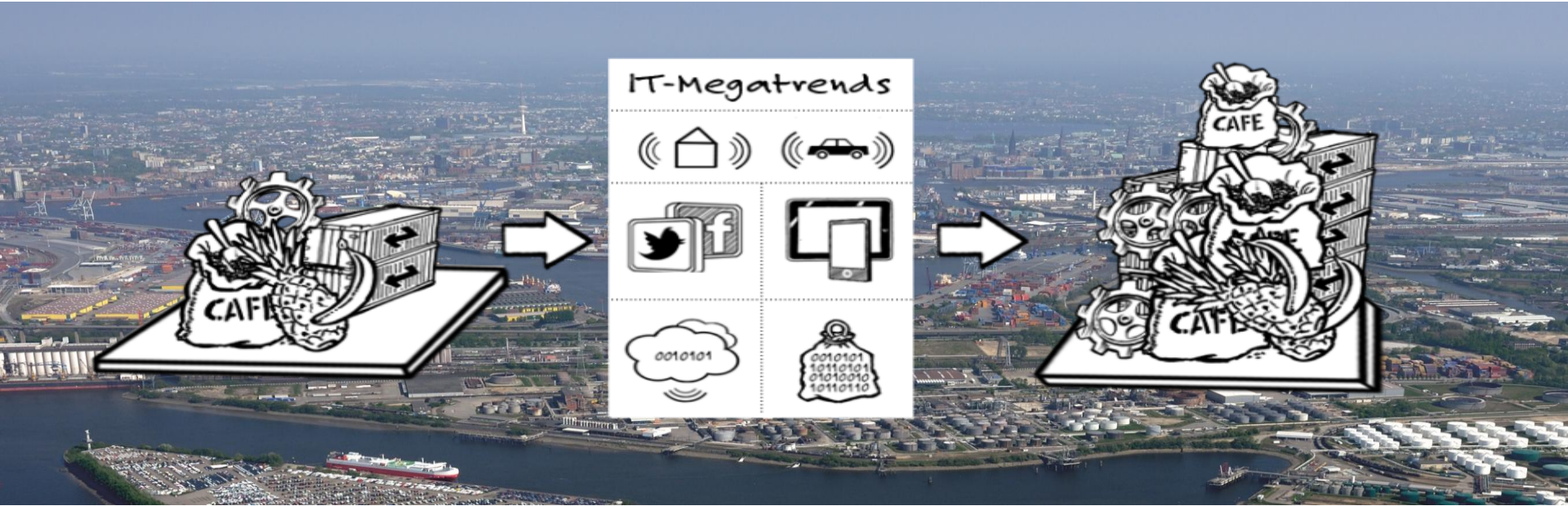
06



Hamburg

PORT DIGITIZATION

smartPORT logistics –
„Same area – handling more cargo“



FUTURE CONCEPTS OF THE PORT OF HAMBURG

Industry 4.0

HPA: smartPORT

**Port management: operation, development and infrastructure
Intelligent traffic and trade flow = higher handling volumes
solutions in the Port of Hamburg**

- strategy: two strong pillars - smartPORT energy and smartPORT logistics
- energy: renewable energy in the Port of Hamburg, eco-friendly mobility by energy redistribution and thus reduce the energy consumption
- logistics: intelligent traffic and trade flow solutions in the Port of Hamburg

www.mediaserver.hamburg.de / Michael Zapf
www.plattform-i40.de



THANK YOU VERY MUCH FOR YOUR ATTENTION!